

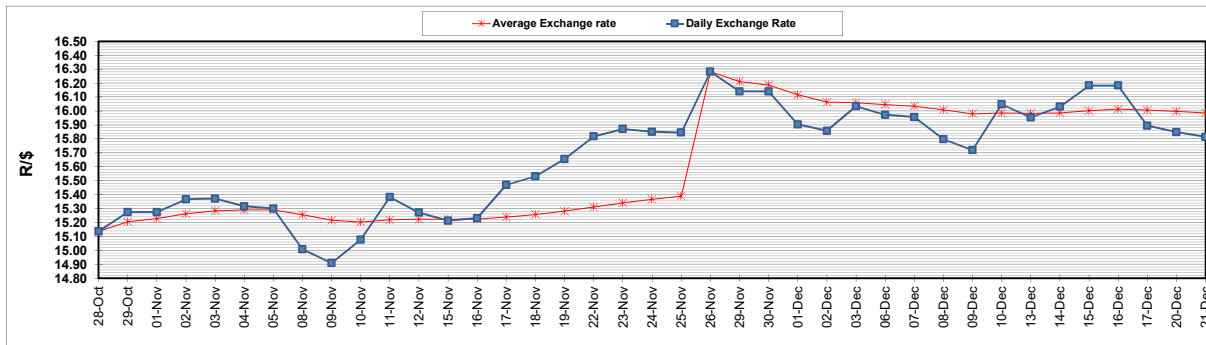
	PETROL 95 ULP	PETROL 93 ULP & LRP	DIESEL 0.05%	DIESEL 0.005%	ILL. PAR.
GAUTENG PUMP PRICE (SA c/l) AS FROM 01/12/2021	2,029.000	2,007.000	-	-	-
WHOLESALE PRICE (SA c/l) AS FROM 01/12/2021	-	-	1,792.480	1,797.880	1,167.688
SINGLE NATIONAL MAXIMUM RETAIL PRICE	-	-	-	-	1,489.000
BASIC FUEL PRICE - 21/12/2021 (SA c/l)	889.028	876.976	860.374	863.243	851.162
PRESS RELEASE CONTRIBUTION TO BFP 01/12/2021 - 21/12/2021 (SA c/l)	973.670	961.670	955.630	961.030	946.128
UNIT OVER/(UNDER) RECOVERY - 21/12/2021 (SA c/l)	84.642	84.694	95.256	97.787	94.966
AVERAGE BASIC FUEL PRICE 26/11/2021 - 21/12/2021	888.025	872.205	872.386	876.144	864.053
AVERAGE UNIT OVER/(UNDER) RECOVERY 26/11/2021 - 21/12/2021	79.552	83.371	76.910	78.219	76.408

ANALYSIS MOVEMENT OF AVERAGE OVER/(UNDER) RECOVERY

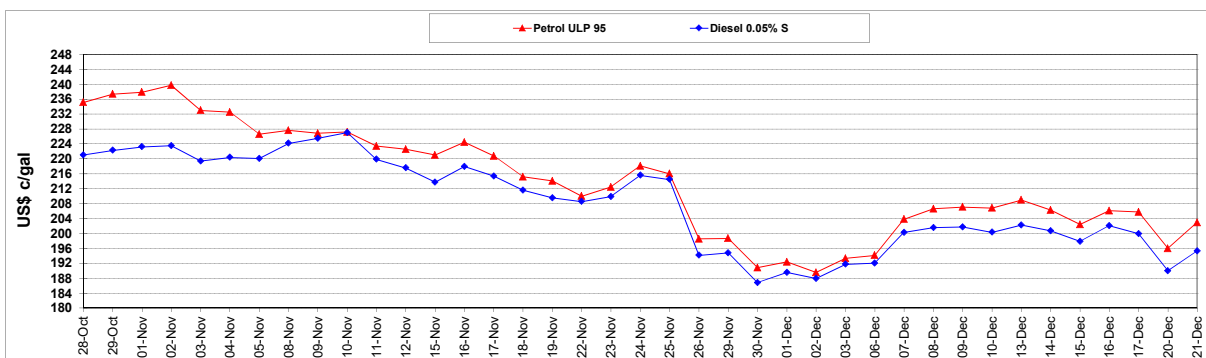
	PETROL 95	PETROL 93	DIESEL 0.05%	DIESEL 0.005%	ILL. PAR.
- MOVEMENT IN INTERNATIONAL PRODUCT PRICES	112.737	115.965	109.511	110.960	108.697
- MOVEMENT IN EXCHANGE RATE	(33.185)	(32.593)	(32.600)	(32.741)	(32.289)
AVERAGE UNIT OVER/(UNDER) RECOVERY 26/11/2021 - 21/12/2021	79.552	83.371	76.910	78.219	76.408

R/\$ EXCHANGE RATE - (R/\$15.8138 - 21/12/2021)

EXCHANGE RATE USED IN BASIC FUEL PRICE



INTERNATIONAL PRODUCT PRICES OF BASKET USED IN BASIC FUEL PRICE



BASIC FUEL PRICE IN SA CENTS PER LITRE

